

*The Garden of
Edette*

DESIGNED BY JOLIEN LOUIS



NYC Born & Raised

Theater Kid: Lighting Design, Set Design, Dramatic Arts

Likes: Underrepresented Stories, Fantasy, Horror, Sci-fi



AFI THESIS 2317

Created + Directed by Guinevere Thomas

Written by Chiara Campelli

Produced by Lauren Rausaw

Cinematography by Matt Kleppner

Edited by Sam Vallone

Add'l Writing by Melissande McLaughlin

LOGLINE

Eternally cursed to kill for her flesh-eating garden, a lonely Creole woman must choose between sacrificing herself or her newfound friend.

How do we represent Edette's culture and backstory?
What does it mean to be alive for 150 years in this world?

How do I make a flesh-eating plant on a thesis budget?

GENRE + TONE

SOUTHERN GOTHIC HORROR

Folktale

somber | haunting | fatalistic



Hereditary (2018) DES: Grace Yun

JOLIEN LOUIS

SETTING

LOCATION + TIME

Pasadena, CA, USA

Present Day + 2013

Suburbia

Craftsman-Style Home

Takes place over 3 days time

EXT. LEMON GROVE AVENUE

EXT. EDETTE'S FRONT YARD

INT. EDETTE'S LIVING ROOM

INT. EDETTE'S KITCHEN

INT. EDETTE'S BATHROOM

INT. EDETTE'S BEDROOM

INT. EDETTE'S PATIO

INT. EDETTE'S GARDEN 1

INT. EDETTE'S GARDEN 2

CHARACTERS



Edette Haydel 70s - Creole, thinning white hair jaded by the weight of her own guilt

Angela Basset, Lynn Whitfield, Loretta Devine

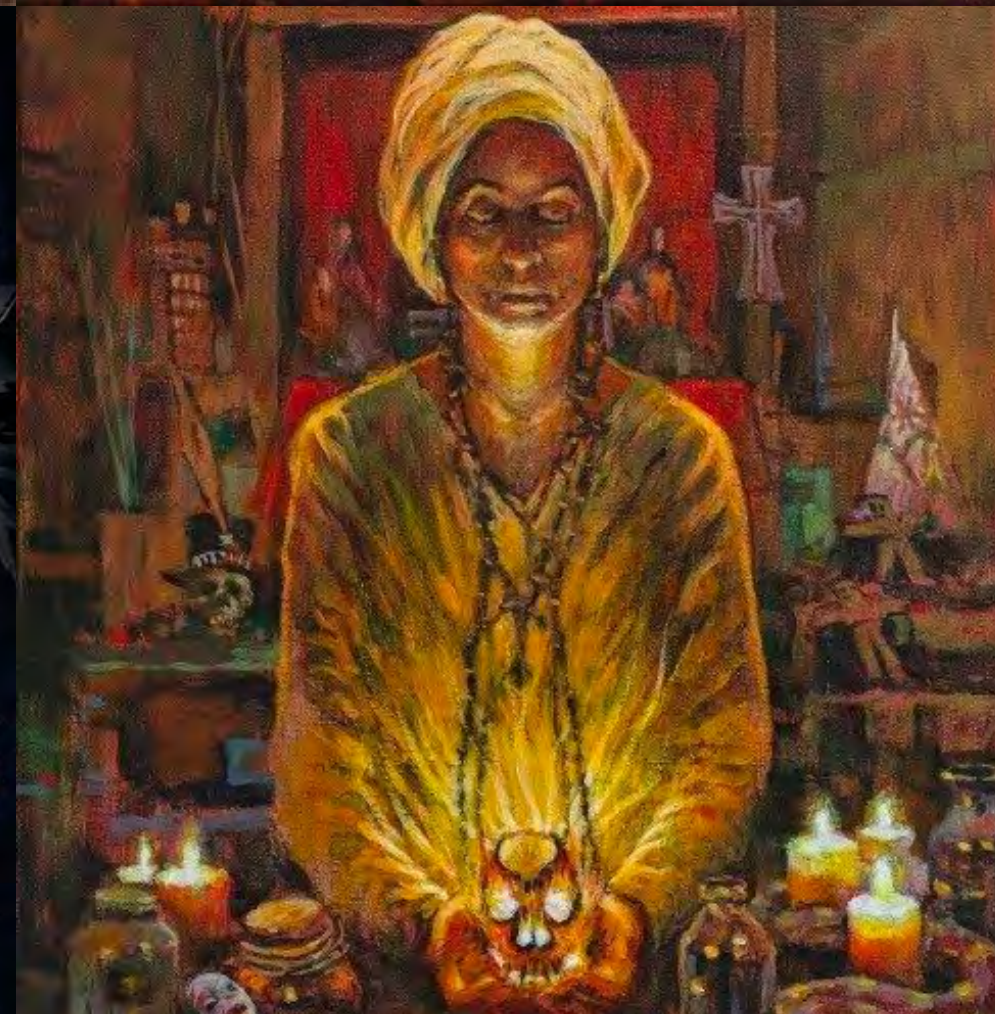


Peri Toussaint 24 - Creole, curly redhead with the innate curiosity of an investigative journalist and the innocence of a child

Lovie Simon, Lexi Underwood, Amandla Stenberg



RESEARCH REFERENCE





VISUAL REFERENCE

AMERICAN SUBURBS AT NIGHT

Isolated, Haunting,
Contained

Alberto Ortega

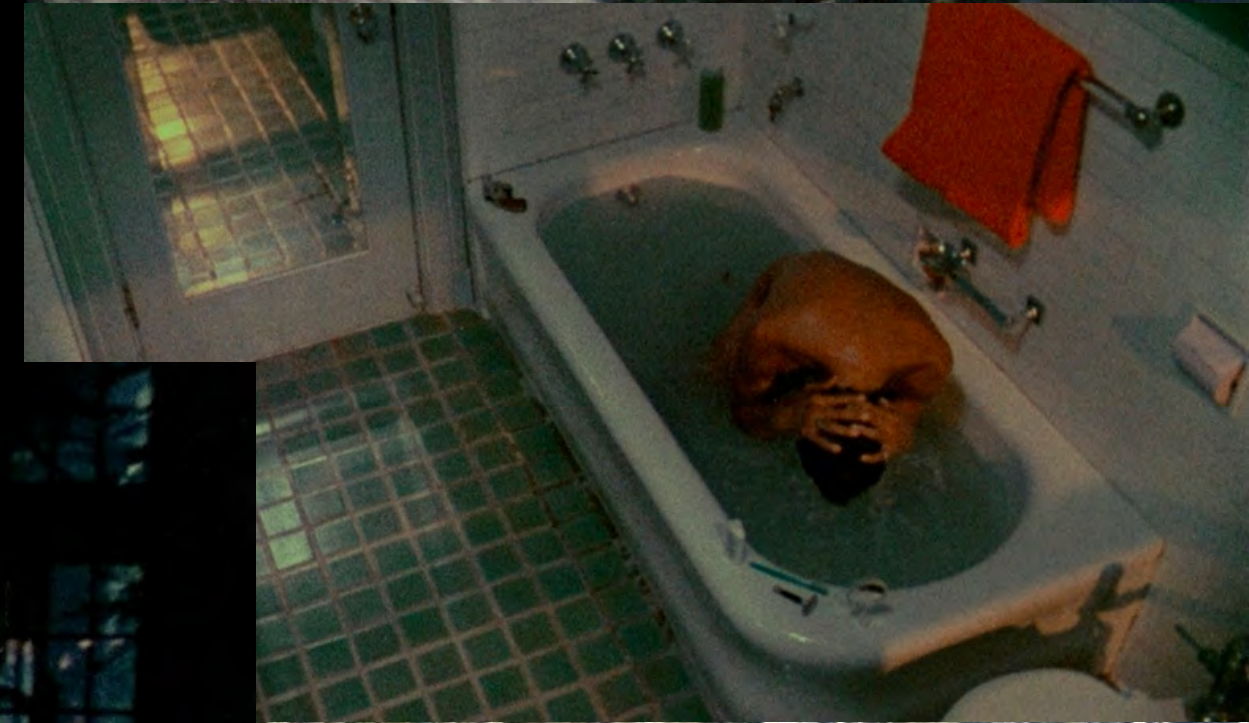
VISUAL REFERENCE

HORROR | BLAXPLOITATION

DES: THOM H. JOHN

Elegant, ethereal,
folkloric, controlled
visuals

Ganja & Hess



DEFINING THE DESIGN

THEMES

Ritual

THE GARDEN AS A LABYRINTH

Public vs. Private Space

EXPLORING EDETTE'S HOME AS
PHYSICAL MANIFESTATION OF GRIEF

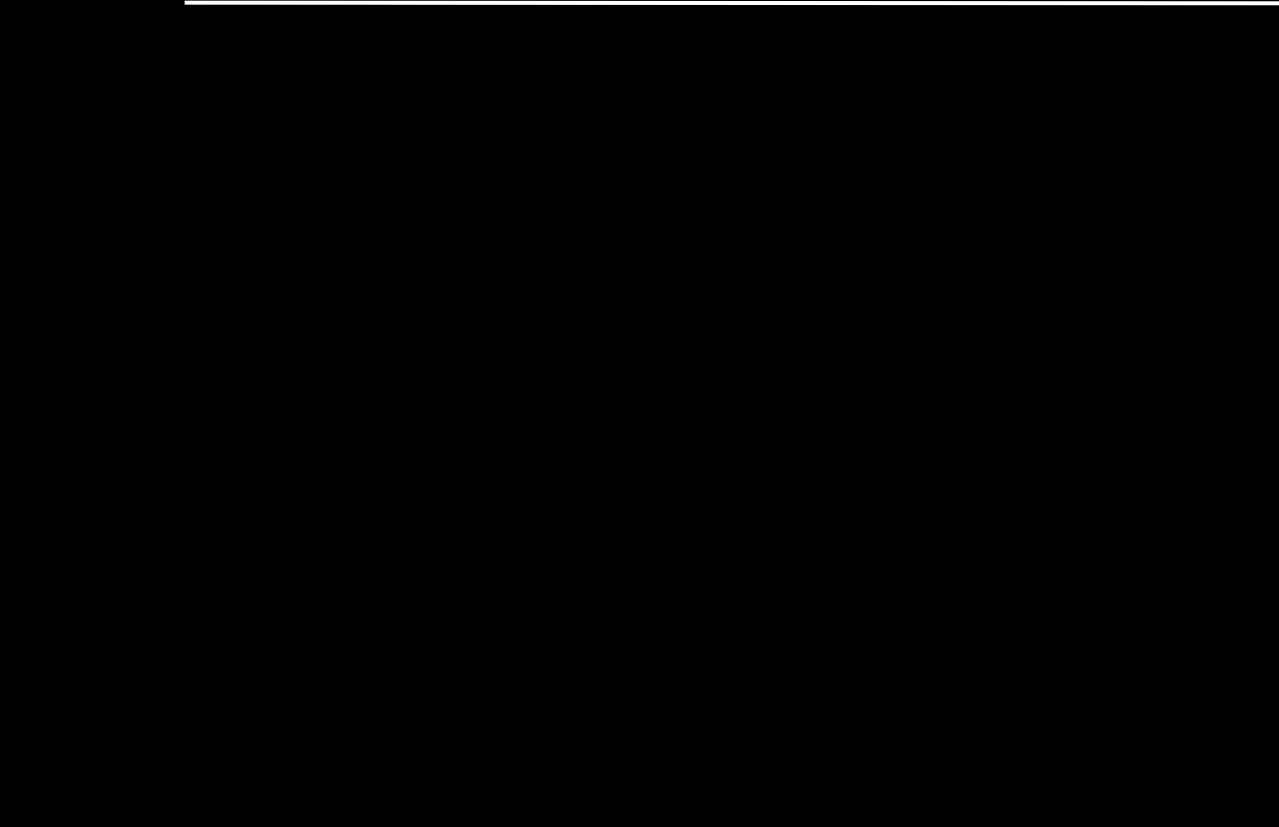
Immortality

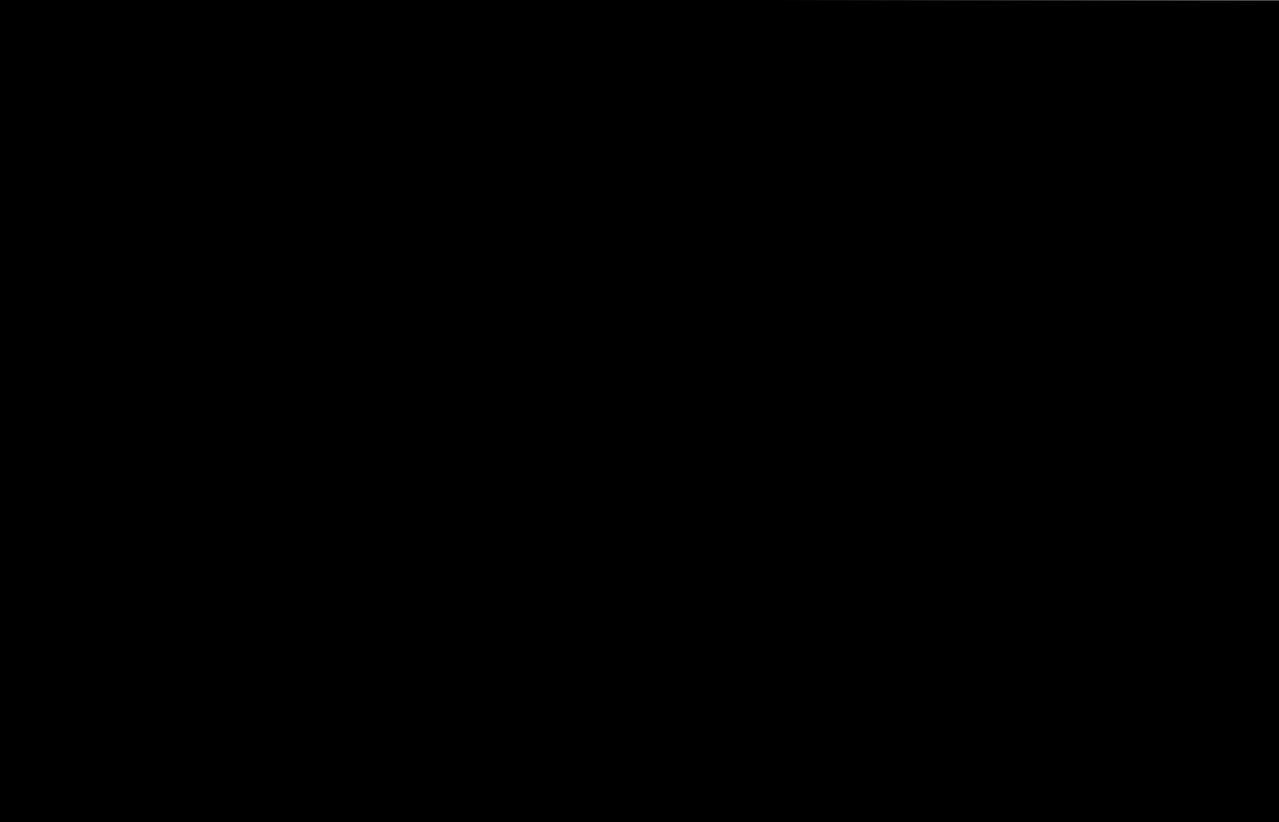
EDETTE AS A BUG STUCK IN AMBER



THE CORPSE FLOWER









EDETTE'S GARDEN - ILLUSTRATION + PHOTOBASH

JOLIEN LOUIS



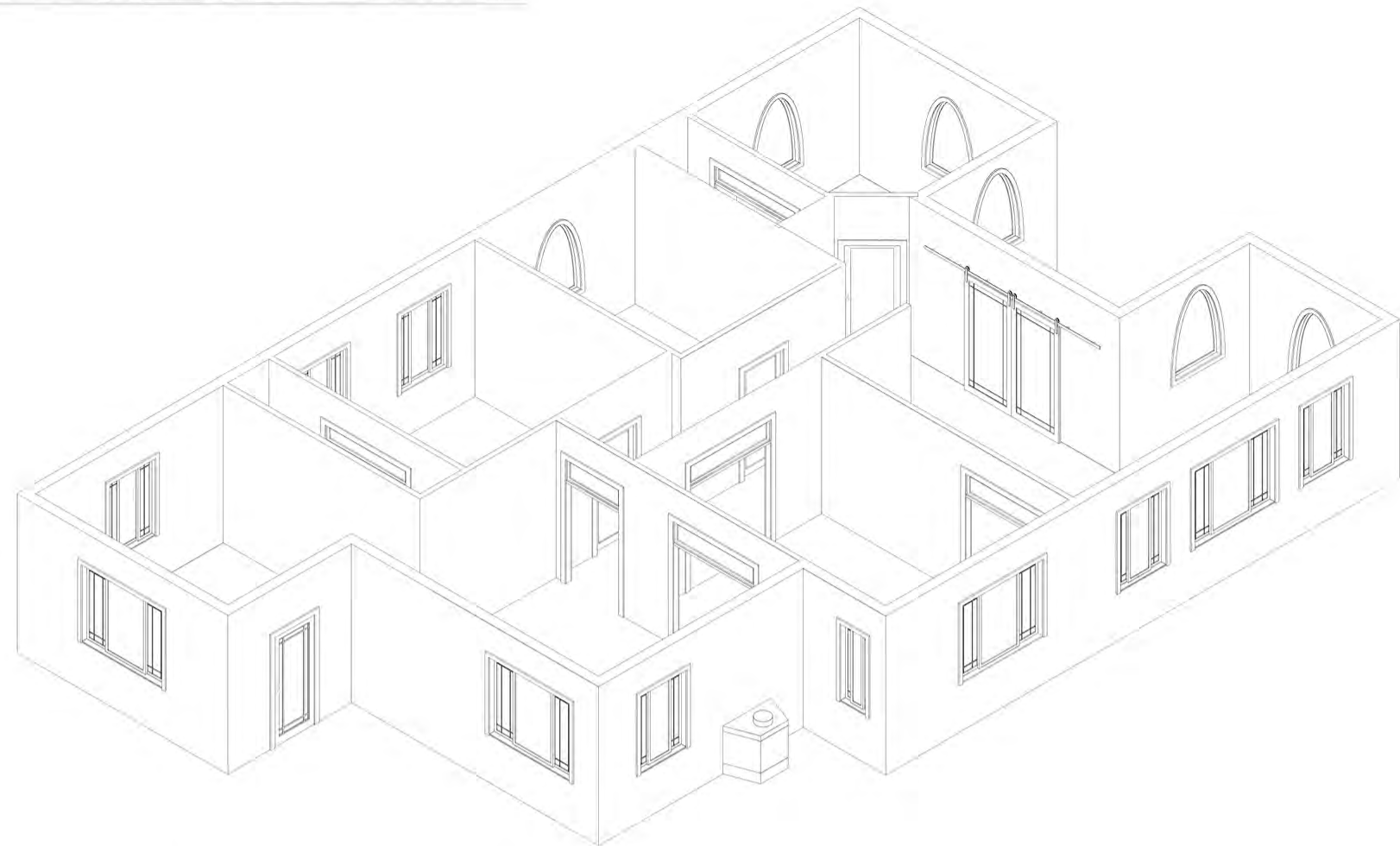
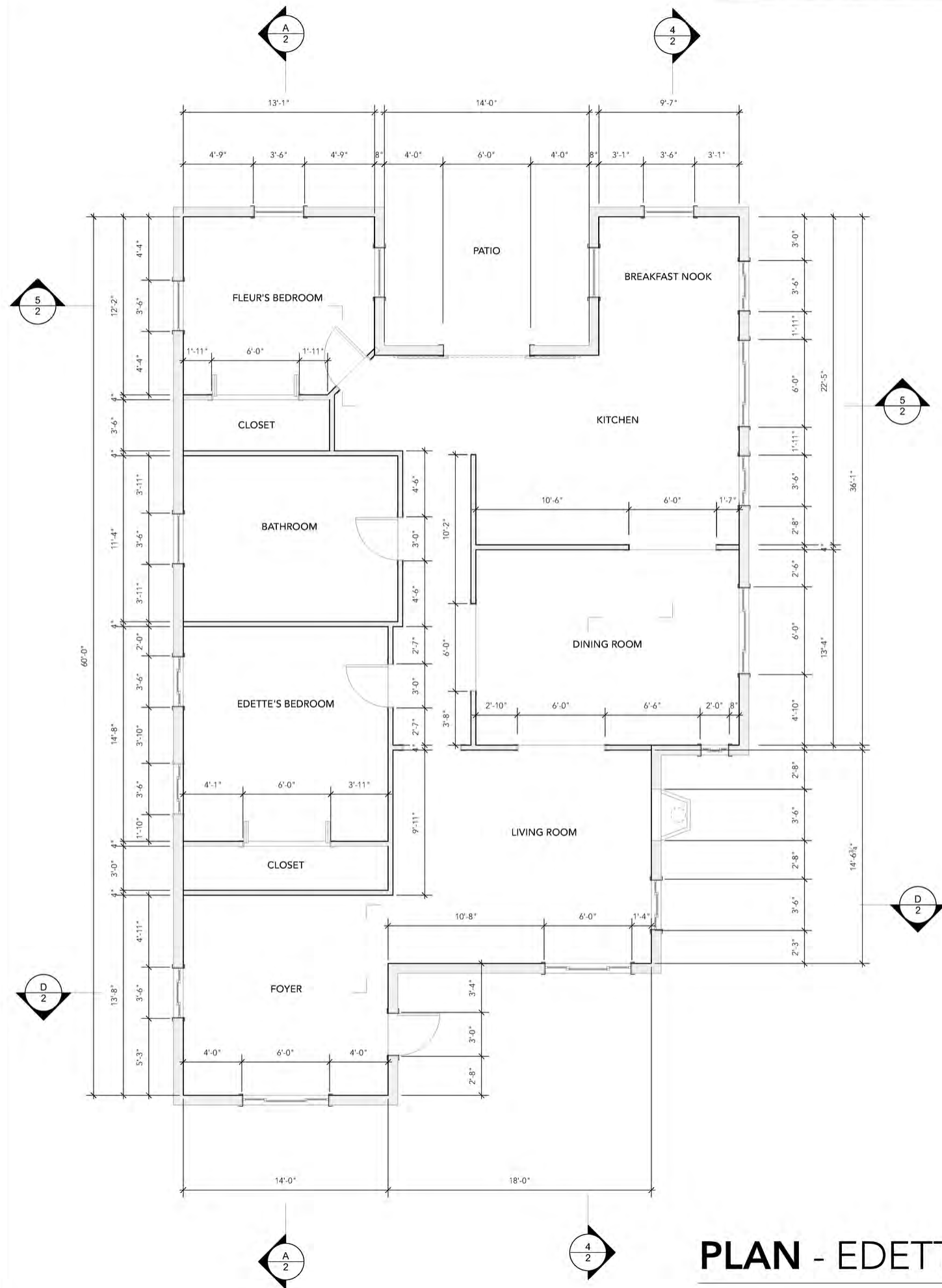
EDETTE'S FRONT YARD - ILLUSTRATION + PHOTOBASH

JOLIEN LOUIS



NOTE: POLYGONS ON PLAN ARE STAND IN PLACEMENTS FOR ALL RENTAL GREENS
 PERRI'S PATH DENOTES CONSTRUCTION COVERAGE NEEDS
 OVERALL 48'X36' PLAN IS ESTIMATE, NOT ALL WALLS/SET DRESSING WILL MAKE IT ON TO SOUNDSTAGE
 PLANT & ALTER PLANS SEPARATE
 CONSTRUCTED ELEMENTS WITHIN GARDEN TBD

2317 AFI THESIS	
1	<i>The Garden of Edette</i>
SET NAME EXT. EDETTE'S GARDEN	PAGE NAME GROUNDPLAN
DESIGNER JULIEN LOUIS	NOTE
DATE 03/07/23	SCALE 3/8" = 1'0"



EDETTE'S HOME - ISOMETRIC VIEW



EDETTE'S HOME - EAST VIEW

PLAN - EDETTE'S HOME

		DES 624 SPRING	
SHOW	<i>The Garden of Edette</i>		
SET NAME	EDETTE'S HOME	PAGE NAME	GROUNDPLAN
DESIGNER	NOTE		
	JULIEN LOUIS		
DATE	05/17/23	SCALE	1/4" = 1'-0"



EDETTE'S DINING ROOM



EDETTE'S PATIO



EDETTE'S GARDEN





Flower Construction



Flower - Continued

THESIS

IN CONCLUSION



JOLIEN LOUIS



Special Thanks

CELINA BERNSTEIN
EMILY POLLACK
NOEL LOPEZ
JORGE NAVA
SAMMY CHAVOYA
DANI RAMIREZ
SAM LULLOFF
AND MANY MORE

JACKSON SHRUB
AFI
ECOSETS
DAWN SYNDER
ERNIE MARJORAM
JOE GARRITY
SUZY SCHOFIELD
AL-E MCWHORTER
ARI B. LOPEZ
CAMILA RODRIGUEZ
EMILY LI
BRYAN SPADAFORA
PAIGE SCHAEFFER
ANDRES DOMIT DEL VALLE
ARMAAN PUJANI
SANDRA RODRIGUEZ
JOSE HERRERA
YAJIE QIN
MOJO WANG
KELSI HOWARD
INTERNATIONAL SILK FLOWERS